

INTRODUCING

DIAMOND

METAL FRAMING™

PRO

Stud Sizes

DP 20	DP 25
2 1/2"	1 5/8"
3 5/8"	2 1/2"
6"	3 5/8"

Knockouts of both 1 1/2" and 3/4" channels.

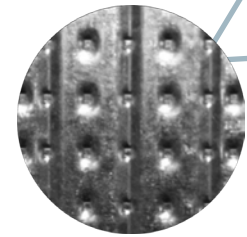
Embossed Chevrons increase strength and provide proper orientation during installation.

Stiffening Ribs provide additional strength and rigidity.

Embossed Inch Track Markers for faster, more accurate installation.

Flange Knurling dimple embossing allows for rapid screw connections.

Multiple Site Line Grooves provide proper screw alignment.



The Diamond Metal Framing™ Pro is an "equivalent" performance test proven, Stud & Track product that combines high strength steel and an innovative profile design with exclusive patented Embossed Chevron & Inch Mark features to raise the bar for high performance drywall framing.

 **SEMCO**
SOUTHEASTERN METALS

A GIBRALTAR INDUSTRIES COMPANY 

Economical Option

Diamond Pro Steel Framing™ saves time, money and labor costs and is an more energy efficient choice over traditional materials. Additionally, steel framing often reduces building insurance costs.

Environmentally Friendly

Diamond Pro Steel Framing™ is 100% recyclable and saves trees by avoiding the use of traditional lumber.

Better Quality

Diamond Pro Steel Framing™ produces straighter and stronger walls. Pre-punched holes allow for easier installation of plumbing and electricity. Roll-forming process produces consistent, quality product.

Safer Than Lumber

Unlike traditional wood framing, Diamond Pro Steel Framing™ won't burn and can easily meet one hour fire ratings.

Long Lasting

Diamond Pro Steel Framing™ will not rot, warp, twist, bow, crack, split, swell or shrink. Steel framing is termite and insect proof and made of the most durable framing material.

Easier Installation

Diamond Pro Steel Framing™ is easier to cut and lighter to handle than traditional lumber. Flange Knurling dimple embossing allows for rapid screw connections.



Fire Resistance Rated
Design No. V485 -1 Hour

ASTM C-645 - Standard Specification for Non-Structural Steel Framing Members

ASTM C-754 - Standard Specification for Installation of Steel Framing Members to Receive Screw-Attached Gypsum Panel Products

ASTM A653 - (steel) min. Grade 50 KSI Yield Embossed

ASTM A1003 - Protective Coating: G40 or equivalent

ASTM A463 - (General. Spec. A924)

ASTM E119 - Standard Test Methods for Fire Tests of Building Construction and Materials

ANSI / UL - 263 - Fire Tests of Building Construction and Materials

Load Tables

DP 25 Composite Limiting Heights (One Layer 1/2" Gypsum Wallboard)
1 1/4" Flange with 1/4" Return Steel Minimum Yield Strength Grade 50

Stud Size	Spacing Inches	5 psf			7.5 psf			10 psf			15 psf		
		L/120	L/240	L/360	L/120	L/240	L/360	L/120	L/240	L/360	L/120	L/240	L/360
1 5/8"	12"	12'-0"	9'-11"	8'-8"	10'-8"	8'-8"	--	9'-11"	7'-11"	--	8'-8"	--	--
	16"	11'-0"	9'-0"	7'-11"	9'-6"	7'-11"	--	9'-0"	--	--	--	--	--
	24"	9'-4"	7'-11"	--	8'-4"	--	--	7'-11"	--	--	--	--	--
2 1/2"	12"	15'-8"	12'-5"	10'-10"	13'-8"	10'-10"	9'-6"	12'-3"	9'-11"	8'-8"	9'-6"	8'-8"	--
	16"	14'-2"	11'-3"	9'-10"	12'-5"	9'-10"	8'-7"	11'-3"	8'-11"	7'-10"	10'-9"	7'-10"	--
	24"	12'-4"	9'-10"	8'-7"	10'-9"	8'-7"	--	9'-8"	7'-9"	--	8'-10"	--	--
3 5/8"	12"	20'-10"	16'-7"	14'-3"	18'-3"	14'-3"	12'-3"	16'-3"	12'-10"	11'-0"	12'-8"	11'-0"	9'-6"
	16"	19'-1"	15'-1"	12'-10"	16'-4"	12'-10"	11'-0"	13'-10"	11'-6"	9'-11"	10'-8"	9'-11"	8'-6"

DP 20 Composite Limiting Heights (One Layer 1/2" Gypsum Wallboard)
1 1/4" Flange with 1/4" Return Steel Minimum Yield Strength Grade 50

Stud Size	Spacing Inches	5 psf			7.5 psf			10 psf			15 psf		
		L/120	L/240	L/360	L/120	L/240	L/360	L/120	L/240	L/360	L/120	L/240	L/360
2 1/2"	12"	19'-10"	15'-9"	13'-6"	17'-4"	13'-6"	10'-8"	15'-9"	11'-5"	9'-1"	13'-6"	9'-1"	7'-10"
	16"	16'-5"	13'-0"	11'-4"	14'-4"	11'-4"	9'-11"	13'-0"	10'-4"	9'-0"	9'-4"	8'-0"	7'-0"
	24"	16'-0"	11'-10"	9'-4"	14'-0"	9'-5"	7'-8"	11'-10"	8'-1"	--	8'-3"	--	--
3 5/8"	12"	22'-0"	17'-5"	15'-1"	19'-2"	15'-1"	12'-10"	17'-5"	13'-5"	11'-5"	15'-1"	11'-5"	9'-9"
	16"	19'-4"	15'-4"	13'-5"	16'-11"	13'-5"	11'-9"	15'-4"	12'-2"	10'-8"	12'-10"	10'-8"	9'-3"
6"	12"	30'-8"	24'-4"	21'-3"	26'-9"	21'-3"	18'-7"	24'-4"	19'-4"	16'-10"	21'-3"	16'-10"	14'-7"
	16"	28'-0"	22'-3"	19'-5"	24'-6"	19'-5"	17'-0"	23'-3"	17'-8"	15'-5"	18'-8"	15'-5"	13'-5"
	24"	25'-0"	19'-10"	17'-4"	21'-8"	17'-4"	14'-10"	18'-10"	15'-7"	13'-2"	14'-2"	13'-2"	11'-3"